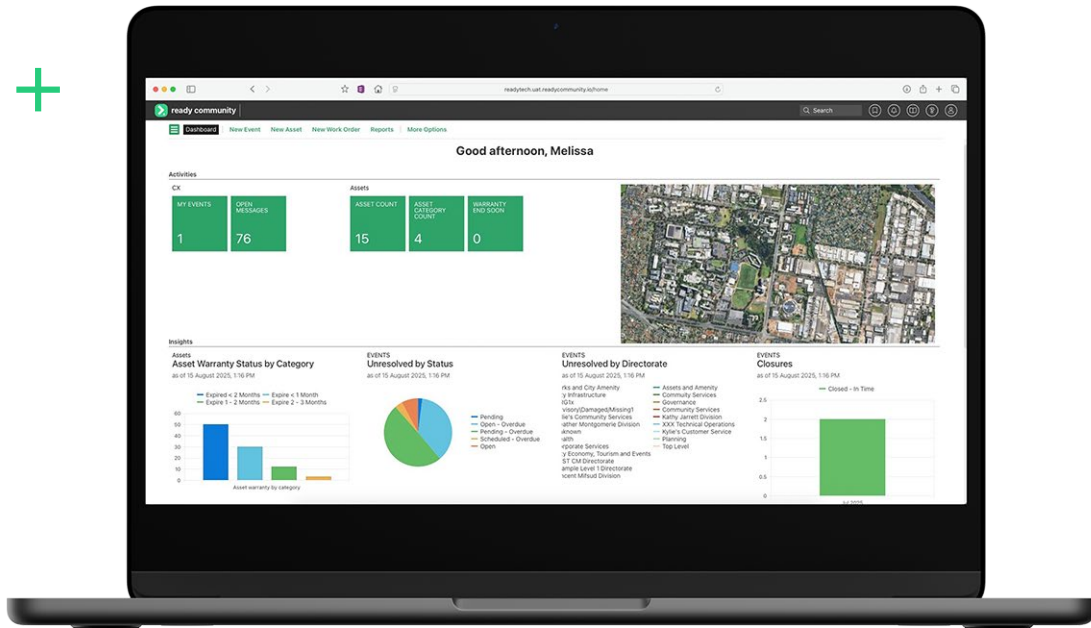


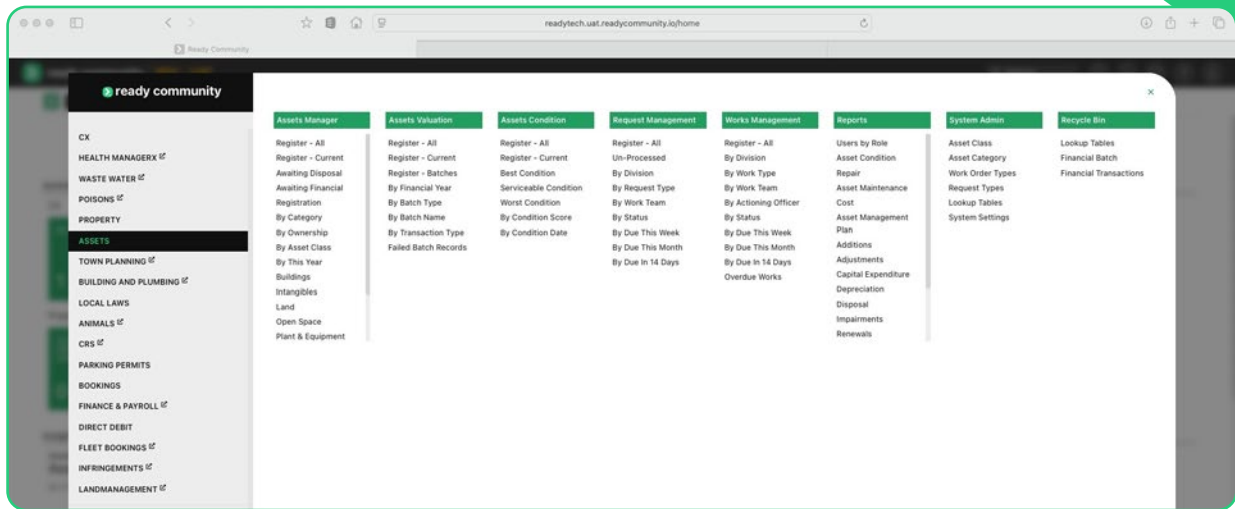


ASSET MANAGEMENT



Asset Management provides an intuitive, centralised platform that consolidates all asset data into a single source of truth. Seamlessly integrating with enterprise systems, it supports comprehensive works and condition-based maintenance planning to enhance operational efficiency and asset longevity.

Want to learn more?
Visit readycommunity.io/asset-management



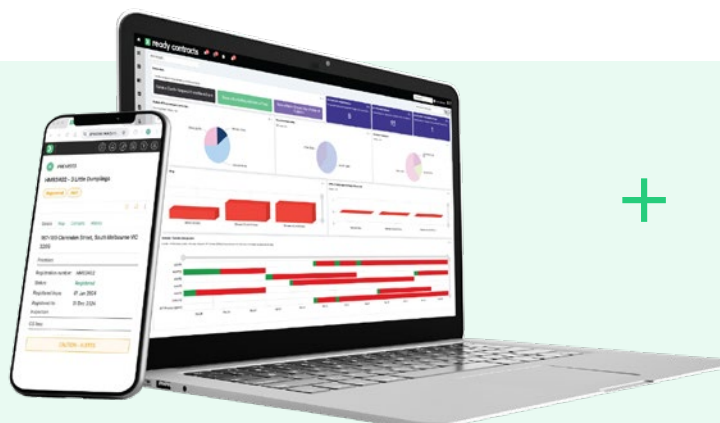
Manage the full asset lifecycle in one system

From planning to disposal, Asset Management supports councils every step of the way, helping to drive better planning and transparency while reducing the total cost of ownership. It enables councils to minimise risk, enhance service delivery, and effectively manage assets across multiple departmental boundaries.

The solution correlates maintenance requirements with service strategy, asset performance standards and risk management, to underpin asset optimisation. The Asset Register also links to other closely tied services like lease management, warranty and maintenance.

Features

- Intuitive dashboard offering a unified view of all asset information across full lifecycle
- Embedded integration with customer service, spatial systems, financials and predictive modelling
- Assets can be grouped into Asset Classes, so you can easily track works and condition for the full lifecycle
- Complete history of work orders, associated purchase orders, budgets and invoices are stored in a central, searchable database
- Easily link people, place and materials to assets, to better manage overall cost and value
- Condition monitoring tracks asset health to prevent failures and guide maintenance



Contact

sales@gov.readytech.io

Connect with us

[in /ReadyTechAU](https://www.linkedin.com/company/ReadyTechAU)

[readycommunity.io](https://www.readycommunity.io)

